

SOCCER

Spring 2025



UNDER ARMOUR

**THE ONLY
WAY IS
THROUGH.**





VISION

TO INSPIRE YOU WITH PERFORMANCE
SOLUTIONS YOU NEVER KNEW
YOU NEEDED BUT CAN'T IMAGINE
LIVING WITHOUT.

MISSION

UNDER ARMOUR
MAKES YOU BETTER.

SOCCER —

- 002 SOCCER UNIFORMS
- 025 SOCCER APPAREL
- 029 SOCCER GLOVES
- 030 SOCCER FOOTWEAR
- 032 SOCCER SOCKS
- 033 SOCCER PROTECTIVE
- 035 SOCCER BAGS

- 036 MEN'S AF TRAINING
- 046 WOMEN'S AF TRAINING

- 052 UNIFORM ORDERING INFO





SOCCER ARMOURFUSE

- Brilliant, vibrant team colors permanently fused directly into textiles
- Limitless customization, all-inclusive pricing with exclusive UA designs and customized prints
- 41 different colors and 18 prints available
- 6 piece minimum order



PRIMETIME V-NECK JERSEY

M: SM-2XL, W: XS-2XL

SHORTSLEEVE	SIZE	PRICE
UJJP5M (M)	SM-2XL	\$113.00
UJJP5W (W)	XS-2XL	\$113.00
LONGSLEEVE		
UJJP6M (M)	SM-2XL	\$123.00
UJJP6W (W)	XS-2XL	\$123.00

- 5.0 oz. lightweight fabric with 4-way stretch and accelerated drying properties
- Shaped bottom hem for increased mobility and comfort

ADDITIONAL LENGTH OPTIONS FOUND ON PAGE 56
 BASE JERSEY DESIGN IS APPROVED FOR HS PLAY
 HS COMPLIANT AWAY JERSEYS MUST BE COMPLETELY WHITE WITH NO DESIGN DETAILS



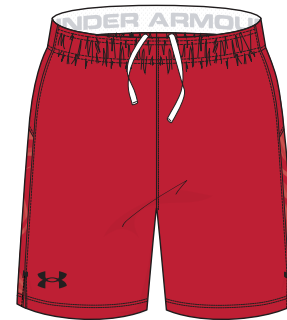
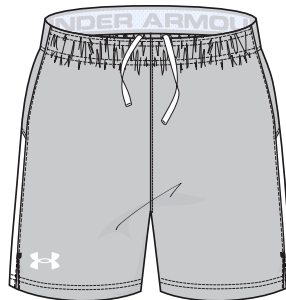
PRIMETIME CREW NECK JERSEY

M: SM-2XL, W: XS-2XL

SHORTSLEEVE	SIZE	PRICE
UJJP7M (M)	SM-2XL	\$113.00
UJJP7W (W)	XS-2XL	\$113.00
LONGSLEEVE		
UJJP8M (M)	SM-2XL	\$123.00
UJJP8W (W)	XS-2XL	\$123.00

- 5.0 oz. lightweight fabric with 4-way stretch and accelerated drying properties
- Shaped bottom hem for increased mobility and comfort
- Raglan Sleeve for increased freedom of movement

ADDITIONAL LENGTH OPTIONS FOUND ON PAGE 56
 BASE JERSEY DESIGN IS APPROVED FOR HS PLAY
 HS COMPLIANT AWAY JERSEYS MUST BE COMPLETELY WHITE WITH NO DESIGN DETAILS



PRIMETIME SHORT

M: SM-2XL, W: XS-2XL

STYLE	INSEAM	SIZE	PRICE
UJUSP2M (M)	7"	SM-2XL	\$85.00
UJUSP2W (W)	4.5"	XS-2XL	\$85.00

- 5.0 oz. lightweight fabric with 4-way stretch and accelerated drying properties
- Split bottom hem for increased mobility and comfort
- Mesh back panel for breathability
- 7" inseam
- Exposed elastic waistband with drawcord

ADDITIONAL LENGTH OPTIONS FOUND ON PAGE 56

FLICK

SHOWN WITH PRIMETIME SHORT 1

ATW

SHOWN WITH PRIMETIME SHORT 1

ALL PRIMETIME JERSEY DESIGNS AVAILABLE IN SHORTSLEEVE & LONGSLEEVE



FEINT

SHOWN WITH PRIMETIME SHORT 1



RABONA

SHOWN WITH PRIMETIME SHORT 1



FLIP FLAP

SHOWN WITH PRIMETIME SHORT 1

ALL PRIMETIME JERSEY DESIGNS AVAILABLE IN SHORTSLEEVE & LONGSLEEVE



ARMOURFUSE® UNIFORMS // ORDERING INFORMATION AND CUSTOMER SERVICE: 1-888-871-0990 // www.underarmourteamuniforms.com

FILL-IN LIFECYCLE TIMING FOUND ON PAGE 58. DECORATION OPTIONS AND ORDERING INFORMATION ARE AVAILABLE ON PAGES 52-58.

PRIMETIME COLLAR JERSEY

M: SM-2XL, W: XS-2XL

SHORTSLEEVE	SIZE	PRICE
UJJP3M (M)	SM-2XL	\$108.50
UJJP3W (W)	XS-2XL	\$108.50
LONGSLEEVE		
UJJP4M (M)	SM-2XL	\$118.50
UJJP4W (W)	XS-2XL	\$118.50

- 4.6 oz. lightweight fabric with 4-way stretch, and accelerated drying properties
- Contrast color binding on collar, side panels and sleeve cuffs
- Heatgear Pointelle Knit Mesh side panels for increased breathability

ADDITIONAL LENGTH OPTIONS FOUND ON PAGE 56
 BASE JERSEY DESIGN IS APPROVED FOR HS PLAY
 HS COMPLIANT AWAY JERSEYS MUST BE COMPLETELY WHITE WITH NO DESIGN DETAILS



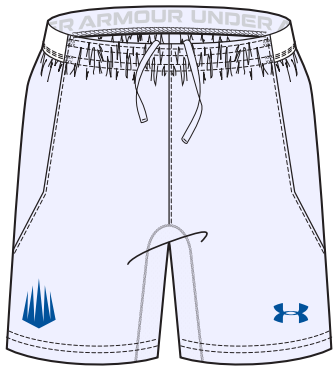
PRIMETIME SHORT

M: SM-2XL, W: XS-2XL

STYLE	INSEAM	SIZE	PRICE
UJUSP1M (M)	7.5"	SM-2XL	\$72.50
UJUSP1W (W)	4.5"	XS-2XL	\$72.50

- 4.6 oz. lightweight fabric with 4-way stretch, and accelerated drying properties
- Heatgear Pointelle Knit Mesh back hem inset & gusset
- Encased front elastic waistband with internal drawcord and exposed back elastic waistband

ADDITIONAL LENGTH OPTIONS FOUND ON PAGE 56



UA HOOP STRIPE

SHOWN WITH PRIMETIME SHORT 1



PRIMETIME SHORT 1 DETAIL

PRIMETIME SHORT 2 DETAIL

ALL PRIMETIME JERSEY DESIGNS AVAILABLE IN SHORTSLEEVE & LONGSLEEVE



UA FLANK

SHOWN WITH PRIMETIME SHORT 1



UA CROSSED

SHOWN WITH PRIMETIME SHORT 1



UA AURA

SHOWN WITH PRIMETIME SHORT 1

ALL PRIMETIME JERSEY DESIGNS AVAILABLE IN SHORTSLEEVE & LONGSLEEVE



ARMOURFUSE® UNIFORMS // ORDERING INFORMATION AND CUSTOMER SERVICE: 1-888-871-0990 // www.underarmourteamuniforms.com

FILL-IN LIFECYCLE TIMING FOUND ON PAGE 58. DECORATION OPTIONS AND ORDERING INFORMATION ARE AVAILABLE ON PAGES 52-58.

PRIMETIME COLLAR JERSEY

M: SM-2XL, W: XS-2XL

SHORTSLEEVE	SIZE	PRICE
UJJP3M (M)	SM-2XL	\$108.50
UJJP3W (W)	XS-2XL	\$108.50
LONGSLEEVE		
UJJP4M (M)	SM-2XL	\$118.50
UJJP4W (W)	XS-2XL	\$118.50

- 4.6 oz. lightweight fabric with 4-way stretch, and accelerated drying properties
- Contrast color binding on collar, side panels and sleeve cuffs
- Heatgear Pointelle Knit Mesh side panels for increased breathability

ADDITIONAL LENGTH OPTIONS FOUND ON PAGE 56
 BASE JERSEY DESIGN IS APPROVED FOR HS PLAY
 HS COMPLIANT AWAY JERSEYS MUST BE COMPLETELY WHITE WITH NO DESIGN DETAILS



PRIMETIME SHORT

M: SM-2XL, W: XS-2XL

STYLE	INSEAM	SIZE	PRICE
UJUSP1M (M)	7.5"	SM-2XL	\$72.50
UJUSP1W (W)	4.5"	XS-2XL	\$72.50

- 4.6 oz. lightweight fabric with 4-way stretch, and accelerated drying properties
- Heatgear Pointelle Knit Mesh back hem inset & gusset
- Encased front elastic waistband with internal drawcord and exposed back elastic waistband

ADDITIONAL LENGTH OPTIONS FOUND ON PAGE 56

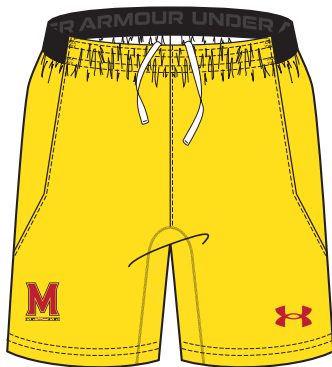


UA FUSION

SHOWN WITH PRIMETIME SHORT 2



ALL PRIMETIME JERSEY DESIGNS AVAILABLE IN SHORTSLEEVE & LONGSLEEVE



UA SHOWCASE

SHOWN WITH PRIMETIME SHORT 1



UA VELOCITY

SHOWN WITH PRIMETIME SHORT 1
ALL WHITE JERSEY IS NOT NFHS COMPLIANT

ALL PRIMETIME JERSEY DESIGNS AVAILABLE IN SHORTSLEEVE & LONGSLEEVE



ARMOURFUSE® UNIFORMS // ORDERING INFORMATION AND CUSTOMER SERVICE: 1-888-871-0990 // www.underarmourteamuniforms.com

FILL-IN LIFECYCLE TIMING FOUND ON PAGE 58. DECORATION OPTIONS AND ORDERING INFORMATION ARE AVAILABLE ON PAGES 52-58.

PRIMETIME V-NECK JERSEY

M: SM-2XL, W: XS-2XL

SHORTSLEEVE	SIZE	PRICE
UJJP1M (M)	SM-2XL	\$108.50
UJJP1W (W)	XS-2XL	\$108.50
LONGSLEEVE		
UJJP2M (M)	SM-2XL	\$118.50
UJJP2W (W)	XS-2XL	\$118.50

- 4.6 oz. lightweight fabric with 4-way stretch, and accelerated drying properties
- Contrast color binding on collar, side panels and sleeve cuffs
- Heatgear Pointelle Knit Mesh side panels for increased breathability

ADDITIONAL LENGTH OPTIONS FOUND ON PAGE 56
 BASE JERSEY DESIGN IS APPROVED FOR HS PLAY
 HS COMPLIANT AWAY JERSEYS MUST BE COMPLETELY WHITE WITH NO DESIGN DETAILS



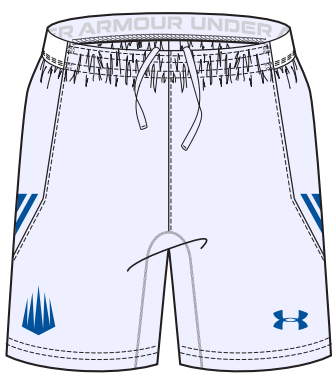
PRIMETIME SHORT

M: SM-2XL, W: XS-2XL

STYLE	INSEAM	SIZE	PRICE
UJUSP1M (M)	7.5"	SM-2XL	\$72.50
UJUSP1W (W)	4.5"	XS-2XL	\$72.50

- 4.6 oz. lightweight fabric with 4-way stretch, and accelerated drying properties
- Heatgear Pointelle Knit Mesh back hem inset & gusset
- Encased front elastic waistband with internal drawcord and exposed back elastic waistband

ADDITIONAL LENGTH OPTIONS FOUND ON PAGE 56



UA HOOP STRIPE

SHOWN WITH PRIMETIME SHORT 1



PRIMETIME SHORT 1 DETAIL

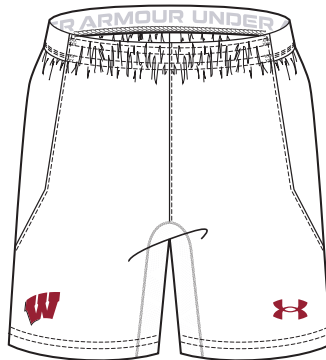
PRIMETIME SHORT 2 DETAIL

ALL PRIMETIME JERSEY DESIGNS AVAILABLE IN SHORTSLEEVE & LONGSLEEVE



UA FLANK

SHOWN WITH PRIMETIME SHORT 1



UA CROSSED

SHOWN WITH PRIMETIME SHORT 1



UA AURA

SHOWN WITH PRIMETIME SHORT 1

ALL PRIMETIME JERSEY DESIGNS AVAILABLE IN SHORTSLEEVE & LONGSLEEVE



ARMOURFUSE® UNIFORMS // ORDERING INFORMATION AND CUSTOMER SERVICE: 1-888-871-0990 // www.underarmourteamuniforms.com

FILL-IN LIFECYCLE TIMING FOUND ON PAGE 58. DECORATION OPTIONS AND ORDERING INFORMATION ARE AVAILABLE ON PAGES 52-58.

PRIMETIME V-NECK JERSEY

M: SM-2XL, W: XS-2XL

SHORTSLEEVE	SIZE	PRICE
UJUP1M (M)	SM-2XL	\$108.50
UJUP1W (W)	XS-2XL	\$108.50
LONGSLEEVE		
UJUP2M (M)	SM-2XL	\$118.50
UJUP2W (W)	XS-2XL	\$118.50

- 4.6 oz. lightweight fabric with 4-way stretch, and accelerated drying properties
- Contrast color binding on collar, side panels and sleeve cuffs
- Heatgear Pointelle Knit Mesh side panels for increased breathability

ADDITIONAL LENGTH OPTIONS FOUND ON PAGE 56
 BASE JERSEY DESIGN IS APPROVED FOR HS PLAY
 HS COMPLIANT AWAY JERSEYS MUST BE COMPLETELY WHITE WITH NO DESIGN DETAILS



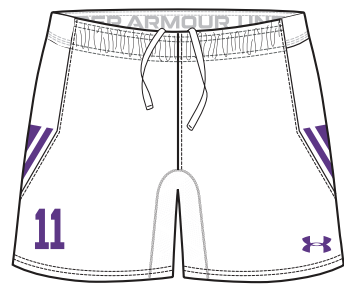
PRIMETIME SHORT

M: SM-2XL, W: XS-2XL

STYLE	INSEAM	SIZE	PRICE
UJUSP1M (M)	7.5"	SM-2XL	\$72.50
UJUSP1W (W)	4.5"	XS-2XL	\$72.50

- 4.6 oz. lightweight fabric with 4-way stretch, and accelerated drying properties
- Heatgear Pointelle Knit Mesh back hem inset & gusset
- Encased front elastic waistband with internal drawcord and exposed back elastic waistband

ADDITIONAL LENGTH OPTIONS FOUND ON PAGE 56



UA FUSION

SHOWN WITH PRIMETIME SHORT 2

ALL PRIMETIME JERSEY DESIGNS AVAILABLE IN SHORTSLEEVE & LONGSLEEVE



UA SHOWCASE

SHOWN WITH PRIMETIME SHORT 1



UA VELOCITY

SHOWN WITH PRIMETIME SHORT 1
ALL WHITE JERSEY IS NOT NFHS COMPLIANT

ALL PRIMETIME JERSEY DESIGNS AVAILABLE IN SHORTSLEEVE & LONGSLEEVE



ARMOURFUSE® UNIFORMS // ORDERING INFORMATION AND CUSTOMER SERVICE: 1-888-871-0990 // www.underarmourteamuniforms.com

FILL-IN LIFECYCLE TIMING FOUND ON PAGE 58. DECORATION OPTIONS AND ORDERING INFORMATION ARE AVAILABLE ON PAGES 52-58.

GAMETIME CREW JERSEY

M: SM-2XL, W: XS-2XL, Y: YSM-YXL

SHORTSLEEVE	SIZE	PRICE
UJUGIM (M)	SM-2XL	\$77.50
UJUGIW (W)	XS-2XL	\$77.50
UJUGIY (Y)	YSM-YXL	\$72.50
LONGSLEEVE		
UJUGLM (M)	SM-2XL	\$88.00
UJUGLW (W)	XS-2XL	\$88.00
UJUGLY (Y)	YSM-YXL	\$82.50

- Lightweight 4-way stretch with moisture transport and maximum breathability
- Stretch flat knit front & back
- Stretch mesh side panels

ADDITIONAL LENGTH OPTIONS FOUND ON PAGE 56
 BASE JERSEY DESIGN IS APPROVED FOR HS PLAY
 HS COMPLIANT AWAY JERSEYS MUST BE COMPLETELY WHITE WITH NO DESIGN DETAILS



GAMETIME SHORT

M: SM-2XL, W: XS-2XL, Y: YSM-YXL

STYLE	INSEAM	SIZE	PRICE
UJUSGIM (M)	7.5"	SM-2XL	\$62.00
UJUSGIW (W)	4.5"	XS-2XL	\$62.00
UJUSGIY (Y)	7"	YSM-YXL	\$57.00

- Armourfuse® short with stretch flat knit front and stretch mesh back
- Encased elastic waistband with internal drawcord

ADDITIONAL LENGTH OPTIONS FOUND ON PAGE 56



UA TOUCHLINE

SHOWN WITH CORE SHORT

ARMOURFUSE CORE SHORT

M: SM-2XL, W: XS-2XL, Y: YSM-YXL

STYLE	INSEAM	SIZE	PRICE
UJUSCSM (M)	7"	SM-2XL	\$51.50
UJUSCSW (W)	4.5"	XS-2XL	\$51.50
UJUSCSY (Y)	6.75"	YSM-YXL	\$46.50

- 100% Polyester Armourfuse
- 4-Way stretch and moisture wicking for mobility and staying dry
- Encased elastic waistband for comfort and performance

ONLY UA LOGO WILL BE EMBELLISHED

ALL GAMETIME CREW JERSEY DESIGNS AVAILABLE IN SHORTSLEEVE & LONGSLEEVE



UA HALFTONE CHECKED

SHOWN WITH CORE SHORT



UA ELASTICO

SHOWN WITH GAMETIME SHORT 1

ALL GAMETIME CREW JERSEY DESIGNS AVAILABLE IN SHORTSLEEVE & LONGSLEEVE



GAMETIME CREW JERSEY

M: SM-2XL, W: XS-2XL, Y: YSM-YXL

SHORTSLEEVE	SIZE	PRICE
UJUGIM (M)	SM-2XL	\$77.50
UJUGIW (W)	XS-2XL	\$77.50
UJUGIY (Y)	YSM-YXL	\$72.50
LONGSLEEVE		
UJUGLM (M)	SM-2XL	\$88.00
UJUGLW (W)	XS-2XL	\$88.00
UJUGLY (Y)	YSM-YXL	\$82.50

- Lightweight 4-way stretch with moisture transport and maximum breathability
- Stretch flat knit front & back
- Stretch mesh side panels

ADDITIONAL LENGTH OPTIONS FOUND ON PAGE 56
 BASE JERSEY DESIGN IS APPROVED FOR HS PLAY
 HS COMPLIANT AWAY JERSEYS MUST BE COMPLETELY WHITE WITH NO DESIGN DETAILS



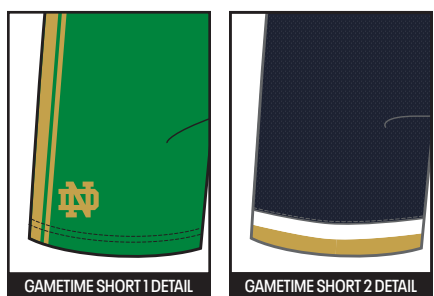
GAMETIME SHORT

M: SM-2XL, W: XS-2XL, Y: YSM-YXL

STYLE	INSEAM	SIZE	PRICE
UJUSGIM (M)	7.5"	SM-2XL	\$62.00
UJUSGIW (W)	4.5"	XS-2XL	\$62.00
UJUSGIY (Y)	7"	YSM-YXL	\$57.00

- Armourfuse® short with stretch flat knit front and stretch mesh back
- Encased elastic waistband with internal drawcord

ADDITIONAL LENGTH OPTIONS FOUND ON PAGE 56



UA EVOLUTION

SHOWN WITH GAMETIME SHORT 2

ALL GAMETIME CREW JERSEY DESIGNS AVAILABLE IN SHORTSLEEVE & LONGSLEEVE



UA SASH

SHOWN WITH GAMETIME SHORT 2



UA LINEUP

SHOWN WITH GAMETIME SHORT 2

ALL GAMETIME CREW JERSEY DESIGNS AVAILABLE IN SHORTSLEEVE & LONGSLEEVE



GAMETIME V-NECK JERSEY

M: SM-2XL, W: XS-2XL, Y: YSM-YXL

STYLE	SIZE	PRICE
UJUG3M (M)	SM-2XL	\$77.50
UJUG3W (W)	XS-2XL	\$77.50
UJUG3Y (Y)	YSM-YXL	\$72.50

- Armourfuse® jersey with stretch flat knit front and stretch mesh back
- V-Neck construction for full flexibility and comforts

ADDITIONAL LENGTH OPTIONS FOUND ON PAGE 56
 BASE JERSEY DESIGN IS APPROVED FOR HS PLAY
 HS COMPLIANT AWAY JERSEYS MUST BE COMPLETELY WHITE WITH NO DESIGN DETAILS



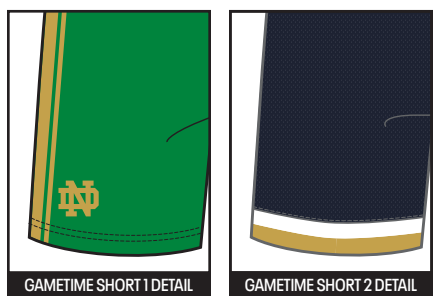
GAMETIME SHORT

M: SM-2XL, W: XS-2XL, Y: YSM-YXL

STYLE	INSEAM	SIZE	PRICE
UJUSG1M (M)	7.5"	SM-2XL	\$62.00
UJUSG1W (W)	4.5"	XS-2XL	\$62.00
UJUSG1Y (Y)	7"	YSM-YXL	\$57.00

- Armourfuse® short with stretch flat knit front and stretch mesh back
- Encased elastic waistband with internal drawcord

ADDITIONAL LENGTH OPTIONS FOUND ON PAGE 56



UA TOUCHLINE

SHOWN WITH CORE SHORT

ARMOURFUSE CORE SHORT

M: SM-2XL, W: XS-2XL, Y: YSM-YXL

STYLE	INSEAM	SIZE	PRICE
UJUSCSM (M)	7"	SM-2XL	\$51.50
UJUSCSW (W)	4.5"	XS-2XL	\$51.50
UJUSCSY (Y)	6.75"	YSM-YXL	\$46.50

- 100% Polyester Armourfuse
- 4-Way stretch and moisture wicking for mobility and staying dry
- Encased elastic waistband for comfort and performance

ONLY UA LOGO WILL BE EMBELLISHED

GAMETIME V-NECK JERSEY AVAILABLE IN SHORTSLEEVE ONLY



UA HALFTONE CHECKED

SHOWN WITH CORE SHORT



UA ELASTICO

SHOWN WITH GAMETIME SHORT 1

GAMETIME V-NECK JERSEY AVAILABLE IN SHORTSLEEVE ONLY



GAMETIME V-NECK JERSEY

M: SM-2XL, W: XS-2XL, Y: YSM-YXL

STYLE	SIZE	PRICE
UJUG3M (M)	SM-2XL	\$77.50
UJUG3W (W)	XS-2XL	\$77.50
UJUG3Y (Y)	YSM-YXL	\$72.50

- Armourfuse® jersey with stretch flat knit front and stretch mesh back
- V-Neck construction for full flexibility and comforts

ADDITIONAL LENGTH OPTIONS FOUND ON PAGE 56
 BASE JERSEY DESIGN IS APPROVED FOR HS PLAY
 HS COMPLIANT AWAY JERSEYS MUST BE COMPLETELY WHITE WITH NO DESIGN DETAILS



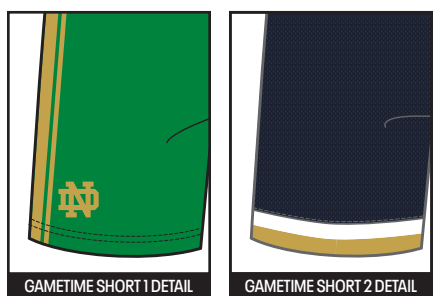
GAMETIME SHORT

M: SM-2XL, W: XS-2XL, Y: YSM-YXL

STYLE	INSEAM	SIZE	PRICE
UJUSG1M (M)	7.5"	SM-2XL	\$62.00
UJUSG1W (W)	4.5"	XS-2XL	\$62.00
UJUSG1Y (Y)	7"	YSM-YXL	\$57.00

- Armourfuse® short with stretch flat knit front and stretch mesh back
- Encased elastic waistband with internal drawcord

ADDITIONAL LENGTH OPTIONS FOUND ON PAGE 56



UA EVOLUTION

SHOWN WITH GAMETIME SHORT 2

GAMETIME V-NECK JERSEY AVAILABLE IN SHORTSLEEVE ONLY



UA SASH

SHOWN WITH GAMETIME SHORT 2



UA LINEUP

SHOWN WITH GAMETIME SHORT 2

GAMETIME V-NECK JERSEY AVAILABLE IN SHORTSLEEVE ONLY



1377217 UA MAQUINA 3.0 JERSEY

\$35.00 | FITTED | SM-2XL

WOMEN'S: 1377218 | \$35.00 | SM-XL

YOUTH: 1377219 | \$30.00 | YSM-YXL

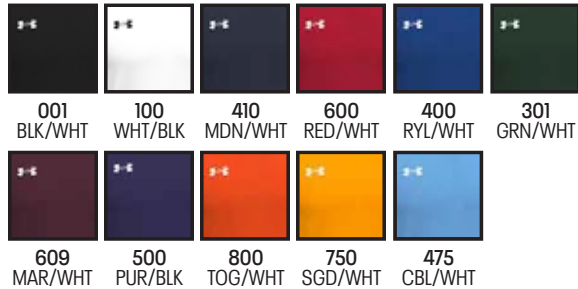
FIRST SHIP: C/O

- Soft, lightweight fabric delivers the ultimate on-field comfort
- Material wicks sweat & dries really fast
- 4-way stretch material moves better in every direction

100% POLYESTER

heatgear

YOUTH OFFERED IN ALL COLORS



1377220 UA MAQUINA 3.0 SHORT

\$25.00 | FITTED | SM-2XL

WOMEN'S: 1377221 | \$25.00 | SM-2XL

YOUTH: 1377223 | \$22.00 | YSM-YXL

FIRST SHIP: C/O

- Soft, lightweight fabric delivers the ultimate on-field comfort
- Material wicks sweat & dries really fast
- 4-way stretch material moves better in every direction
- Encased elastic waistband with internal drawcord for a stay-put fit
- No liner

100% POLYESTER

heatgear

YOUTH OFFERED IN ALL COLORS



NEW

UA CHALLENGER JERSEY

FIRST SHIP: 12/20/2024

- Smooth, lightweight, fast-drying fabric for superior performance
- Material wicks sweat & dries really fast
- Contrast color sleeves with piping detail for an elevated look & feel
- Updated, more streamlined fit

heatgear

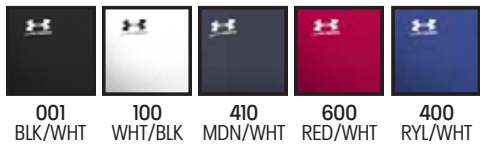
YOUTH OFFERED IN ALL COLORS

MEN'S SOLID: 1390104

\$25.00 | **LOOSE** | SM-4XL (3XL, 4XL: 15%UPCHARGE)

WOMEN'S SOLID: 1390106 | \$25.00 | XS-2XL

YOUTH SOLID: 1390108 | \$20.00 | YXS-YXL



MEN'S STRIPE: 1390112

\$30.00 | **LOOSE** | SM-4XL (3XL, 4XL: 15%UPCHARGE)

WOMEN'S STRIPE: 1390113 | \$30.00 | XS-2XL

YOUTH STRIPE: 6001839 | \$25.00 | YXS-YXL



NEW

1390105

UA CHALLENGER SHORT

\$20.00 | **LOOSE** | SM-4XL (3XL, 4XL: 15%UPCHARGE)

WOMEN'S: 1390107 | \$20.00 | XS-2XL

YOUTH: 1390109 | \$18.00 | YXS-YXL

FIRST SHIP: 12/20/2024

- Smooth, lightweight, fast-drying knit fabric for superior performance
- Material wicks sweat & dries really fast
- Encased elastic waistband with internal drawcord
- Contrast piping detail for an elevated look & feel
- Updated, more streamlined fit

heatgear

YOUTH OFFERED IN ALL COLORS



1364966

UA WALL GK JERSEY

\$45.00 | **LOOSE** | SM-2XL

YOUTH: 1364967 | \$40.00 | YXS-YXL

FIRST SHIP: C/O

- Lightweight microthread 4-Way Stretch fabric
- Updated design lines
- Embossed print on sleeves

100% POLYESTER

heatgear

YOUTH OFFERED IN ALL COLORS



001 BLK/WHT
 475 CBL/BLK
 750 SGD/BLK

1287906

PERFORMANCE TRAINING BIB

\$12.00 | **LOOSE** | XS (OSFA YOUTH), LG (OSFA ADULT)

FIRST SHIP: C/O

- Breathable and lightweight mesh design for training

100% POLYESTER

heatgear



327 POI/WHT
 419 CPR/WHT
 678 NPU/WHT
 771 SNB/BLK

1379494 CHALLENGER TRAINING JACKET

\$65.00 | FITTED | SM-2XL

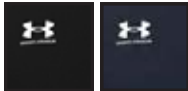
WOMEN'S: 1379600 | \$65.00 | XS-XL

YOUTH: 1379707 | \$60.00 | YXS-YXL

FIRST SHIP: C/O

- Durable knit fabric is light, tough & breathable
- Bomber-inspired cuffs, collar & hem
- Fast-drying, wicking, & lightweight fabric for superior performance
- Fitted, with updated design lines

100% POLYESTER



001
BLK
M, W, Y

410
MDN
M



1379587 CHALLENGER TRAINING PANT

\$55.00 | FITTED | SM-2XL

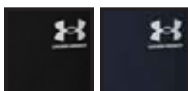
WOMEN'S: 1379598 | \$55.00 | XS-XL

YOUTH: 1379709 | \$50.00 | YXS-YXL

FIRST SHIP: C/O

- 4-way stretch fabrication allows for greater mobility in any direction
- Fast-drying, wicking, & lightweight fabric for superior performance
- Encased elastic waistband with internal drawcord
- Bottom ankle zippers for easy on/off during training
- Fitted, with updated design lines and a tapered leg

100% POLYESTER



001
BLK
M, W, Y

410
MDN
M, W



NEW

1379708

B'S CHALLENGER TRACKSUIT

\$65.00 | FITTED | YXS-YXL

FIRST SHIP: 6/20/2024

- Textured knit fabric is light, tough & breathable
- Material wicks sweat & dries really fast

JACKET:

- Open hand pockets

PANTS:

- Encased elastic waistband with internal drawcord
- Ankle zips for easy on & off even over cleats

100% POLYESTER



001
BLK



1379589 M'S CHALLENGER TRAINING TOP

\$25.00 | **FITTED** | SM-2XL

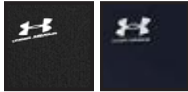
YOUTH SS: 1366494 | \$20.00 | YXS-YXL

FIRST SHIP: C/O

- 4-way stretch fabrication allows for greater mobility in any direction
- Fast-drying, wicking, & lightweight fabric for superior performance
- Constructed with a shaped hem and mesh side panels for increased breathability
- Anti-odor technology prevents the growth of odor causing microbes

100% POLYESTER

YOUTH OFFERED IN ALL COLORS



001
BLK

410
MDN

ALL COLORWAYS COLOR BLOCKED



1379603 W'S CHALLENGER SS TRAINING TOP

\$25.00 | **FITTED** | XS-XL

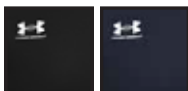
YOUTH : 1366494 | \$20.00 | YXS-YXL

FIRST SHIP: C/O

- 4-way stretch fabrication allows for greater mobility in any direction
- Fast-drying, wicking, & lightweight fabric for superior performance
- Constructed with a shaped hem and mesh side panels for increased breathability
- Anti-odor technology prevents the growth of odor causing microbes

100% POLYESTER

YOUTH OFFERED IN ALL COLORS



001
BLK

410
MDN

ALL COLORWAYS SOLID



APPAREL

1379507 M'S CHALLENGER TRAINING SHORT

\$25.00 | FITTED | SM-2XL

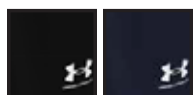
YOUTH: 1366495 | \$22.00 | YXS-YXL

FIRST SHIP: C/O

- 4-way stretch fabrication allows for greater mobility in any direction
- Fast-drying, wicking, & lightweight fabric for superior performance
- Constructed with mesh side panels for strategic increased breathability
- Encased elastic waistband with internal drawcord
- Anti-odor technology prevents the growth of odor-causing microbes
- Inseam: 7.5"

100% POLYESTER

YOUTH OFFERED IN ALL COLORS



001
BLK 410
MDN

ALL COLORWAYS COLOR BLOCKED

1379597 W'S CHALLENGER TRAINING SHORT

\$25.00 | FITTED | XS-XL

YOUTH: 1366495 | \$22.00 | YXS-YXL

FIRST SHIP: C/O

- 4-way stretch fabrication allows for greater mobility in any direction
- Fast-drying, wicking, & lightweight fabric for superior performance
- Constructed with mesh side panels for strategic increased breathability
- Encased elastic waistband with internal drawcord
- Anti-odor technology prevents the growth of odor-causing microbes
- Inseam: 4.5"

100% POLYESTER

YOUTH OFFERED IN ALL COLORS



001
BLK

ALL COLORWAYS SOLID

1328183 UA FIELD PLAYERS GLOVE 2.0

\$30.00 | COMES IN PAIRS | SIZES: SM-XL

FIRST SHIP: C/O

- ColdGear® Infrared technology uses a soft, thermo-conductive inner coating to absorb & retain your own body heat
- Integrated silicone grip on palm for precise throw-in control
- Extra soft Speedwipe™ fleece placed on back of index finger & thumb

87% POLYESTER/13% ELASTANE



001
BLK/WHT

3027700
UA MAGNETICO ELITE 4.0 FG

\$250.00 | SIZES: 4-14

FIRST SHIP: C/O // LAST SHIP: 5/31/2025

- UA Clone upper provides a truly customized fit, no matter your foot size
- An internal layer of flexible, auxetic material molds around the foot for a precise, glove-like fit & feel
- 3D print for additional touch & control & silicone strike zone for maximum control when shooting
- Knit collar & tongue for a sock-like fit with internal foam for heel hold & added comfort
- Asymmetrical tongue allows for additional space on the medial side for control, passing & shooting
- Lightweight soleplate with mixed stud control outsole for multi-directional movement
- Enhanced stud shape mitigates pressure & provides optimum traction



001
 BLK/ATH/WHT



101
 WHT/WHT/BLK



862
 ARES RED/
 ARES RED/STREAM



348
 SILICA GRN/
 SILICA GRN/HVY

3027698
UA MAGNETICO SELECT JR 3.0 FG

\$60.00 | SIZES: 1-6

FIRST SHIP: C/O // LAST SHIP: 5/31/2025

- Soft, synthetic material wraps around your ankle & midfoot for extra stability & locked in support
- Form-fitting toe box for unmatched touch & feel
- EVA sockliner for underfoot comfort
- Conical studs enable quickness in all directions for enhanced agility & change of direction



001
 BLK/ATH/WHT



101
 WHT/WHT/BLK



862
 ARES RED/
 ARES RED/STREAM

NEW

3028288

UA SHADOW ELITE 3.0 FG

\$220.00 | SIZES: 3.5-13, 14

FIRST SHIP: 12/20/2024 // LAST SHIP: 5/31/2025

- Complete UA Intelliknit upper for minimalist ergonomic knit that delivers a second skin feel
- Full length Carbon Fiber Agility outsole built for maximum speed and response in all directions
- Engineered zonal stretch, dynamic fit, and lock down properties
- Premium internal foam package for heel hold and comfort
- Neverwet water resistant coating for minimal water uptake
- EVA molded sockliner



004
BLK/ARES RED/
METALLIC GUN METAL



016
ATH/WHT/RACER RED



348
SILICA GRN/HVY/BLK

NEW

3028289

UA W'S SHADOW ELITE 3.0 FG

\$220.00 | SIZES: 5, 14

FIRST SHIP: 12/20/2024 // LAST SHIP: 5/31/2025

- Complete UA Intelliknit upper for minimalist ergonomic knit that delivers a second skin feel
- Mid-cut collar for increased proprioception
- Full length Carbon Fiber Agility outsole built for maximum speed and response in all directions
- Engineered zonal stretch, dynamic fit, and lock down properties
- Premium internal foam package for heel hold and comfort
- Neverwet water resistant coating for minimal water uptake
- EVA molded sockliner with a higher arch and heel for female specific fit



001
BLK/CSR/MSV



100
WHT/MSV/BLK



847
FIRE/ARES RED/STREAM

1387084
UA MAGNETICO GRIP
OVER-THE-CALF UNISEX

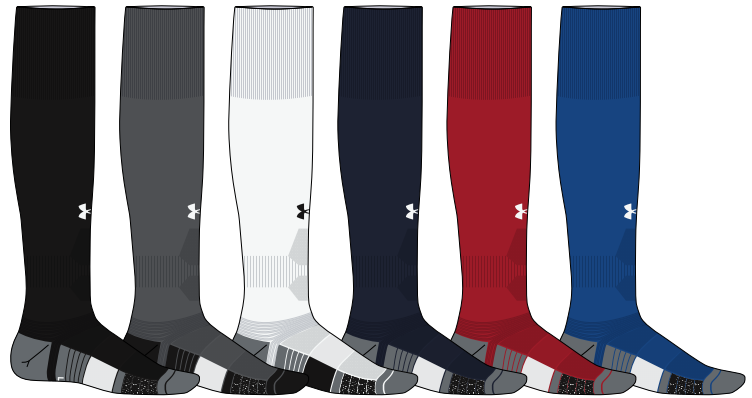
\$20.00 | SINGLE PAIR

SM (YOUTH 13.5K-4.5 / WOMEN'S 4-6),
 MD (YOUTH 4.5-7 / MEN'S 7-8.5 / WOMEN'S 6-10),
 LG (MEN'S 8.5-13 / WOMEN'S 10-14), XL (MEN'S 13-16)

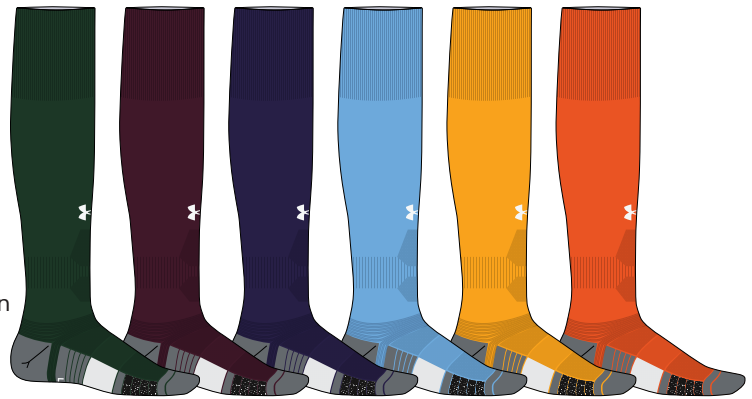
FIRST SHIP: 12/20/2024

- Sweat-activated ArmourGrip™ yarns on forefoot & back of heel help prevent slippage in cleats
- Medium cushioning throughout foot for comfort & protection
- Unique ankle construction for ultimate comfort & support where you need it
- Mesh panels on top of foot & calf for added breathability
- Durable material wicks sweat & dries really fast
- Anti-odor technology helps prevent odor in the sock
- Embedded arch support helps reduce foot fatigue
- Fitted heel contours around your foot for a better fit
- Fold-down cuff
- Left/Right specific fit

56% POLYESTER, 40% NYLON, 4% ELASTANE



001 BLK/PITCH/WHT
 040 GPH/BLK/WHT
 100 WHT/PITCH/BLK
 410 MDN/PITCH/WHT
 600 RED/PITCH/WHT
 400 RYL/PITCH/WHT



301 GRN/PITCH/WHT
 609 MAR/PITCH/WHT
 500 PUR/PITCH/WHT
 465 HORBLUE/PITCH/WHT
 750 SGD/PITCH/WHT
 800 TOG/PITCH/WHT



860 DKO/PITCH/WHT
 625 CRD/PITCH/WHT
 305 TKG/PITCH/WHT
 230 GRIDIRON/PITCH/WHT
 654 TPK/PITCH/WHT
 722 CTL/PITCH/WHT

1385176 UA MAGNETICO POCKET OVER-THE-CALF UNISEX

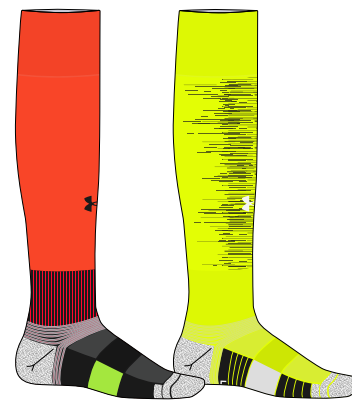
\$28.00 | SINGLE PAIR

SM (YOUTH 13.5K-4.5 / WOMEN'S 4-6),
MD (YOUTH 4.5-7 / MEN'S 7-8.5 / WOMEN'S 6-10),
LG (MEN'S 8.5-13 / WOMEN'S 10-14)

FIRST SHIP: 12/20/2024

- Easy access, built-in pocket keeps shin guards of all sizes secure without any excess bulk
- Sweat-activated ArmourGrip™ yarns on forefoot & back of heel help prevent slippage in cleats
- Medium cushioning throughout foot for comfort & protection
- Unique ankle construction for ultimate comfort & support where you need it
- Mesh panels on top of foot & calf for added breathability
- Durable material wicks sweat & dries really fast
- Anti-odor technology helps prevent odor in the sock
- Embedded arch support helps reduce foot fatigue
- Fitted heel contours around your foot for a better fit
- Fold-down cuff
- Left/Right specific fit

54% POLYESTER, 42% NYLON, 4% ELASTANE
LINER: 62% NYLON, 32% POLYESTER, 4% ELASTANE



862 ARES RED/BLK/BLK 731 HVY/BLK/WHT

PROTECTIVE

UA21540 UA SHADOW PRO SHINGUARD

\$22.00 | SM, MD, LG

FIRST SHIP: C/O

- Armour Flex shell provides flexible protection
- Charged foam padding
- Sold with ergonomic calf sleeves
- Meets NOCSAE standards



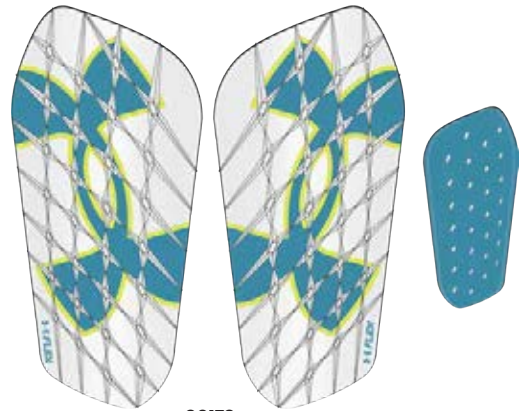
50173
GLITCH/VAPOR GREEN

UA21560 UA SHADOW SELECT SHINGUARD

\$12.00 | SM, MD, LG

FIRST SHIP: C/O

- Lightweight and flexible protection
- Vented shell to allow air flow to the skin



90173
WHITE/CAPRI

UA21100 UA SHINGUARD SLEEVES

\$12.00 | SM, MD, LG

FIRST SHIP: C/O

- Ergonomic shape provides comfort and stability
- Sold as a pair



00001
BLACK

1350097 UA ALL SPORT BACKPACK

\$55.00 | 19.7" X 11.9" X 6.3"
CUB. VOL. 25 L

FIRST SHIP: C/O

- UA Storm technology delivers an element-battling, highly water-resistant finish
- Airvent front panel & padded back panel for ultimate breathability & comfort
- Stow-away front carrier net can fit regulation size soccer ball, football or basketball
- Second bag strap clip for multiple ways to carry
- Front valuables pocket
- Top grab handle
- Side water bottle pocket

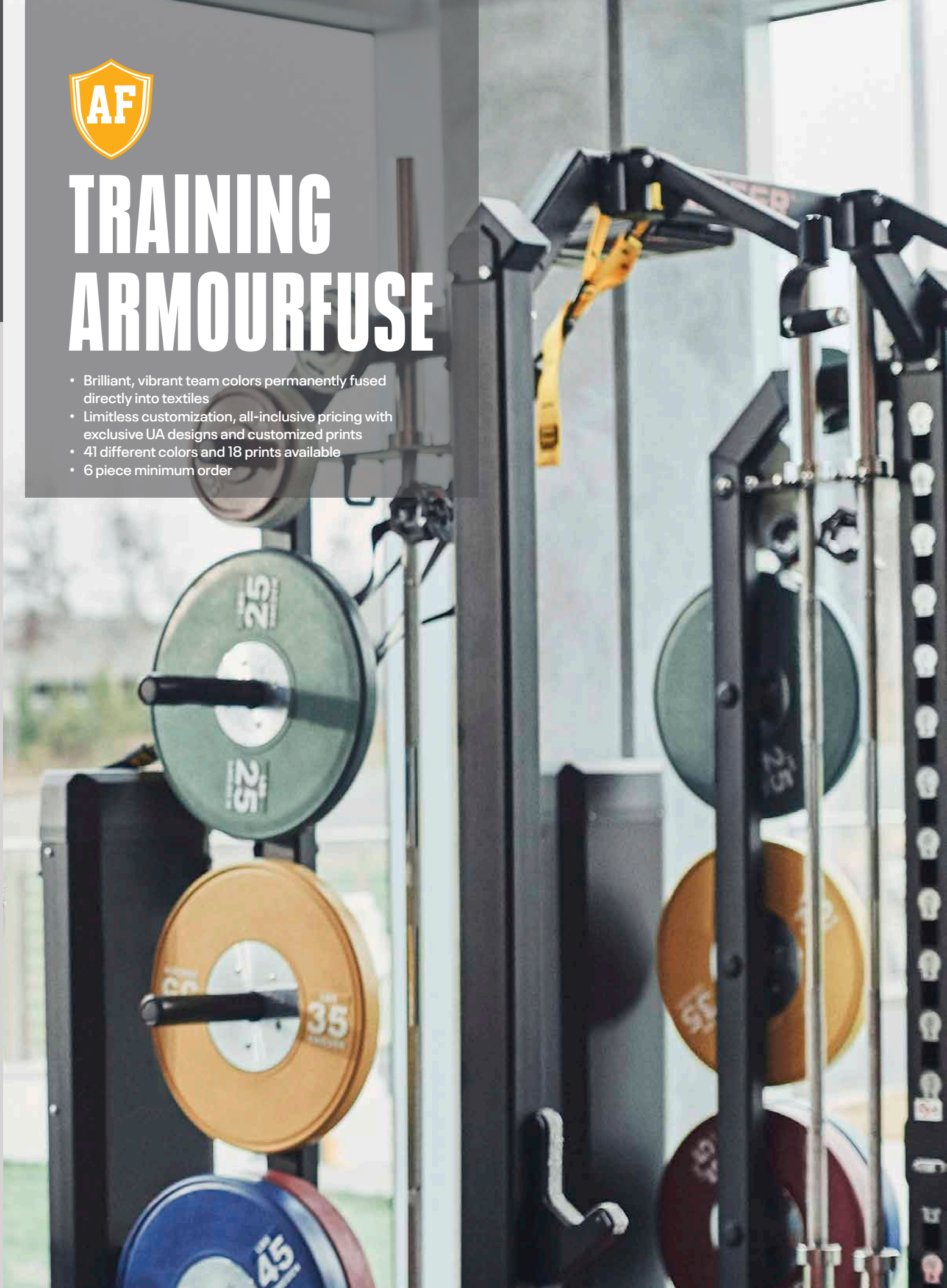
86% POLYESTER, 14% NYLON





TRAINING ARMOURFUSE

- Brilliant, vibrant team colors permanently fused directly into textiles
- Limitless customization, all-inclusive pricing with exclusive UA designs and customized prints
- 41 different colors and 18 prints available
- 6 piece minimum order



AF TRAINING HOODY

XS-2XL, OVERSIZE 3XL-4XL, YSM-YXL

STYLE	SIZE	PRICE
UJGSLHM (M)	XS-2XL	\$122.00
UJGSLHY (Y)	YSM-YXL	\$111.50

OVERSIZED SURCHARGE +\$5 PER SIZE
 ADDITIONAL LENGTH OPTIONS FOUND ON PAGE 56



SPEED

NEW DESIGN FIRST SHIP: 6/1/2024



SPRINT



SCOUT



UA ECLIPSE



AF LONGSLEEVE HOODED SHOOTER

XS-2XL, OVERSIZE 3XL-4XL, YSM-YXL

STYLE	SIZE	PRICE
UJGTHDM (M)	SM-2XL	\$119.00
UJGTHDY (Y)	YSM-YXL	\$114.00

- New lightweight 4.8 oz. fabric with increased stretch for ultimate comfort

OVERSIZED SURCHARGE +\$5 PER SIZE
ADDITIONAL LENGTH OPTIONS FOUND ON PAGE 56



SPEED

NEW DESIGN FIRST SHIP: 6/1/2024

AF SHORTSLEEVE HOODED SHOOTER

XS-2XL, OVERSIZE 3XL-4XL, YSM-YXL

STYLE	SIZE	PRICE
UJGTSSM (M)	SM-2XL	\$114.00
UJGTSSY (Y)	YSM-YXL	\$109.00

- New lightweight 4.8 oz. fabric with increased stretch for ultimate comfort

OVERSIZED SURCHARGE +\$5 PER SIZE
ADDITIONAL LENGTH OPTIONS FOUND ON PAGE 56



SPEED

NEW DESIGN FIRST SHIP: 6/1/2024

AF SLEEVELESS HOODED SHOOTER

XS-2XL, OVERSIZE 3XL-4XL

STYLE	SIZE	PRICE
UJGTHVM (M)	SM-2XL	\$94.00

- New lightweight 4.8 oz. fabric with increased stretch for ultimate comfort

OVERSIZED SURCHARGE +\$5 PER SIZE
ADDITIONAL LENGTH OPTIONS FOUND ON PAGE 56



SPEED

NEW DESIGN FIRST SHIP: 6/1/2024

AF SHORTSLEEVE ¼ ZIP

XS-2XL, OVERSIZE 3XL-4XL

STYLE	SIZE	PRICE
UJGQZVM (M)	SM-2XL	\$120.00

OVERSIZED SURCHARGE +\$5 PER SIZE
ADDITIONAL LENGTH OPTIONS FOUND ON PAGE 56



SPEED

NEW DESIGN FIRST SHIP: 6/1/2024





SPRINT



SCOUT



UA ECLIPSE



SPRINT



SCOUT



UA ECLIPSE



SPRINT



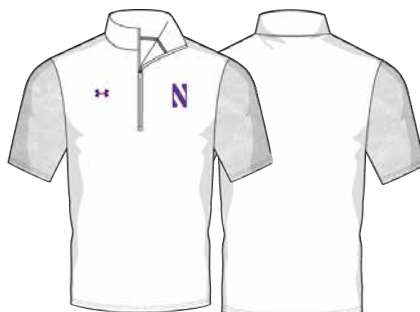
SCOUT



UA ECLIPSE



SPRINT



SCOUT



UA ECLIPSE



AF TRAINING ¼ ZIP

XS-2XL, OVERSIZE 3XL-4XL

- New lightweight 4.8 oz. fabric with increased stretch for ultimate comfort

STYLE	SIZE	PRICE
UJGQZLM (M)	SM-2XL	\$130.00

OVERSIZED SURCHARGE +\$5 PER SIZE
 ADDITIONAL LENGTH OPTIONS FOUND ON PAGE 56



SPEED

NEW DESIGN FIRST SHIP: 6/1/2024

AF TRAINING LONGSLEEVE TEE

XS-2XL, OVERSIZE 3XL-4XL, YSM-YXL

STYLE	SIZE	PRICE
UJGJL2M (M)	XS-2XL	\$90.00
UJGJL2Y (Y)	YSM-YXL	\$86.00

- New lightweight 4.8 oz. fabric with increased stretch for ultimate comfort

OVERSIZED SURCHARGE +\$5 PER SIZE
 ADDITIONAL LENGTH OPTIONS FOUND ON PAGE 56



SPEED

NEW DESIGN FIRST SHIP: 6/1/2024

AF TRAINING SHORTSLEEVE TEE

XS-2XL, OVERSIZE 3XL-4XL, YSM-YXL

LOOSE S T	SIZE	PRICE
UJGS2M (M)	XS-2XL	\$75.00
UJGS2Y (Y)	YSM-YXL	\$71.00

- New lightweight 4.8 oz. fabric with increased stretch for ultimate comfort

OVERSIZED SURCHARGE +\$5 PER SIZE
 ADDITIONAL LENGTH OPTIONS FOUND ON PAGE 56



SPEED

NEW DESIGN FIRST SHIP: 6/1/2024





SPRINT



SCOUT



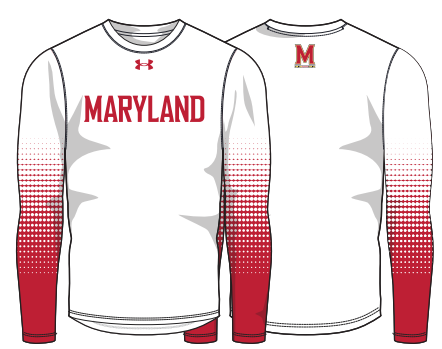
UA ECLIPSE



SPRINT



SCOUT



UA ECLIPSE



SPRINT



SCOUT



UA ECLIPSE



NEW

AF TRAINING SHORTS

FIRST SHIP: 10/25/2024 // XS-2XL, OVERSIZE 3XL-5XL, YSM-YXL

POCKETED SHORT	SIZE	PRICE
UJGS3PM (M)	XS-2XL	\$75.00
UJGS3PY (Y)	YSM-YXL	\$70.00

NON-POCKETED SHORT	SIZE	PRICE
UJGS3M (M)	XS-2XL	\$70.00
UJGS3Y (Y)	YSM-YXL	\$65.00

9" INSEAM FOR POCKETED AND NON-POCKETED SHORT
OVERSIZED SURCHARGE +\$5 PER SIZE
ADDITIONAL LENGTH OPTIONS FOUND ON PAGE 56



SPEED

NEW DESIGN FIRST SHIP: 6/1/2024



SPRINT



SCOUT



UA ECLIPSE

AF TRAINING COMPRESSION SLEEVELESS

XS-2XL, OVERSIZE 3XL-4XL

STYLE	SIZE	PRICE
UJGCB (M)	XS-2XL	\$65.00

OVERSIZED SURCHARGE +\$5 PER SIZE
ADDITIONAL LENGTH OPTIONS FOUND ON PAGE 56



SPEED

NEW DESIGN FIRST SHIP: 6/1/2024



SPRINT



SCOUT



UA ECLIPSE



HALF SLEEVE



SPEED

NEW DESIGN FIRST SHIP: 6/1/2024

AF TRAINING COMPRESSION HALF SLEEVE

XS-2XL, OVERSIZE 3XL-4XL

STYLE	SIZE	PRICE
UJGHBL (M)	XS-2XL	\$70.50

OVERSIZED SURCHARGE +\$5 PER SIZE
ADDITIONAL LENGTH OPTIONS FOUND ON PAGE 56



SPRINT

AF TRAINING COMPRESSION SHORTSLEEVE

XS-2XL, OVERSIZE 3XL-4XL

STYLE	SIZE	PRICE
UJGTBL (M)	XS-2XL	\$65.00

OVERSIZED SURCHARGE +\$5 PER SIZE
ADDITIONAL LENGTH OPTIONS FOUND ON PAGE 56



SCOUT

AF TRAINING COMPRESSION LONGSLEEVE

XS-2XL, OVERSIZE 3XL-4XL

STYLE	SIZE	PRICE
UJGCLS (M)	XS-2XL	\$75.50

OVERSIZED SURCHARGE +\$5 PER SIZE
ADDITIONAL LENGTH OPTIONS FOUND ON PAGE 56



UA ECLIPSE



SHORTSLEEVE



SPEED

NEW DESIGN FIRST SHIP: 6/1/2024

LONGSLEEVE



SPEED

NEW DESIGN FIRST SHIP: 6/1/2024



SPRINT



SPRINT



SCOUT



SCOUT



UA ECLIPSE

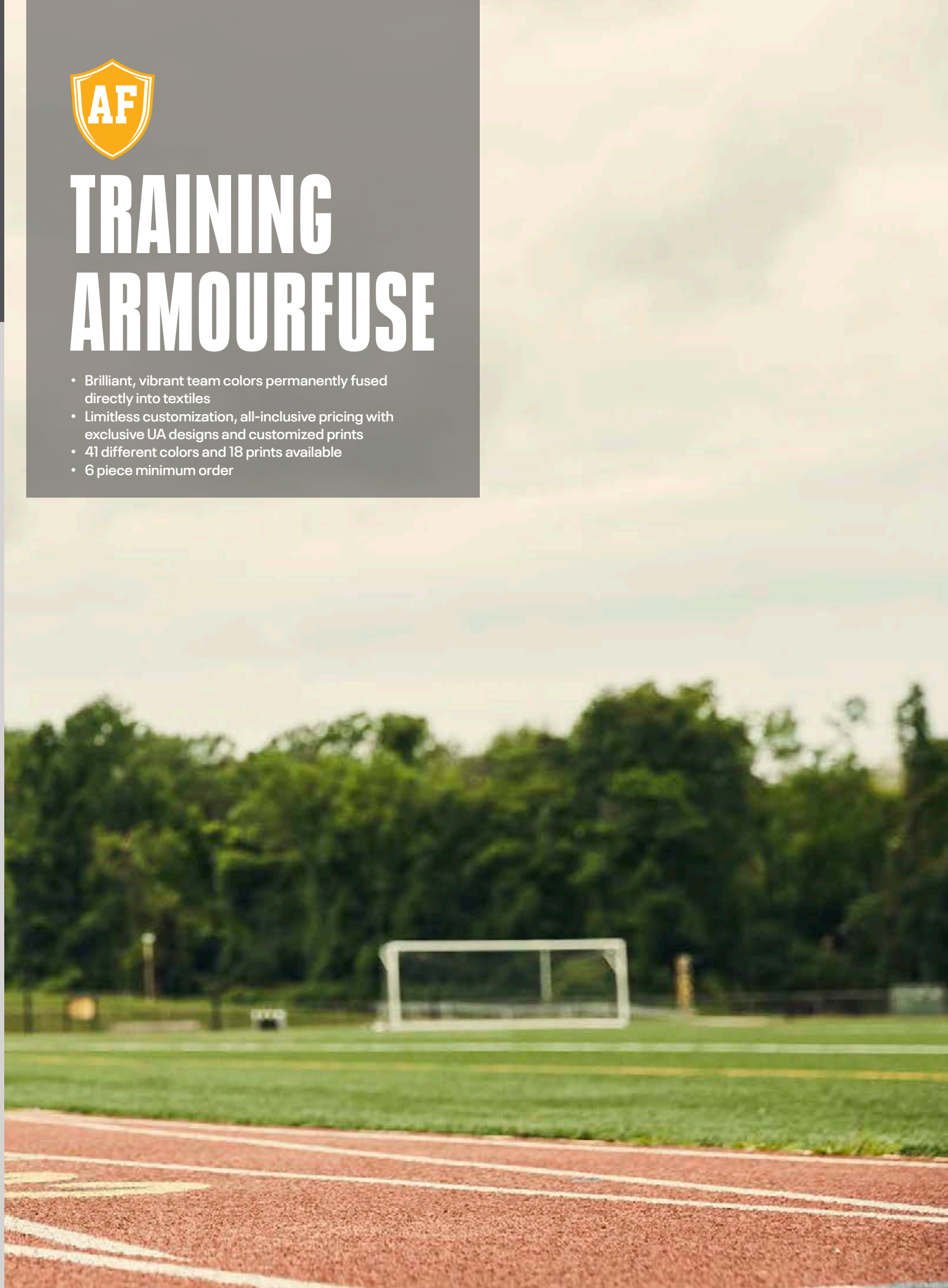


UA ECLIPSE



TRAINING ARMOURFUSE

- Brilliant, vibrant team colors permanently fused directly into textiles
- Limitless customization, all-inclusive pricing with exclusive UA designs and customized prints
- 41 different colors and 18 prints available
- 6 piece minimum order



AF TRAINING HOODY

XS-2XL, OVERSIZE 3XL, YSM-YXL

STYLE	SIZE	PRICE
UJGSLHW (W)	XS-2XL	\$122.00
UJGSLHY (Y)	YSM-YXL	\$111.50

OVERSIZED SURCHARGE +\$5 PER SIZE
 ADDITIONAL LENGTH OPTIONS FOUND ON PAGE 56



SPEED

NEW DESIGN FIRST SHIP: 6/1/2024



SPRINT



SCOUT



UA ECLIPSE



AF TRAINING ½ ZIP

XS-2XL, OVERSIZE 3XL

STYLE	SIZE	PRICE
UJGHZLW (W)	XS-2XL	\$130.00

- New lightweight 4.8 oz. fabric with increased stretch for ultimate comfort

OVERSIZED SURCHARGE +\$5 PER SIZE
 ADDITIONAL LENGTH OPTIONS FOUND ON PAGE 56



SPEED

NEW DESIGN FIRST SHIP: 6/1/2024



SPRINT



SCOUT



UA ECLIPSE




SPEED

NEW DESIGN FIRST SHIP: 6/1/2024


SPEED

NEW DESIGN FIRST SHIP: 6/1/2024

AF TRAINING SHORTSLEEVE TEE

XS-2XL, OVERSIZE 3XL, YSM-YXL

LOOSEST	SIZE	PRICE
UJGS2W (W)	XS-2XL	\$75.00
UJGS2Y (Y)	YSM-YXL	\$71.00

- New lightweight 4.8 oz. fabric with increased stretch for ultimate comfort

 OVERSIZED SURCHARGE +\$5 PER SIZE
 ADDITIONAL LENGTH OPTIONS FOUND ON PAGE 56

SPRINT

SPRINT

AF SHORTSLEEVE HOODED SHOOTER

SM-2XL, OVERSIZE 3XL, YSM-YXL

STYLE	SIZE	PRICE
UJGTSSW (W)	SM-2XL	\$114.00
UJGTSSY (Y)	YSM-YXL	\$109.00

- New lightweight 4.8 oz. fabric with increased stretch for ultimate comfort

 OVERSIZED SURCHARGE +\$5 PER SIZE
 ADDITIONAL LENGTH OPTIONS FOUND ON PAGE 56

SCOUT

SCOUT

UA ECLIPSE

UA ECLIPSE



SPEED

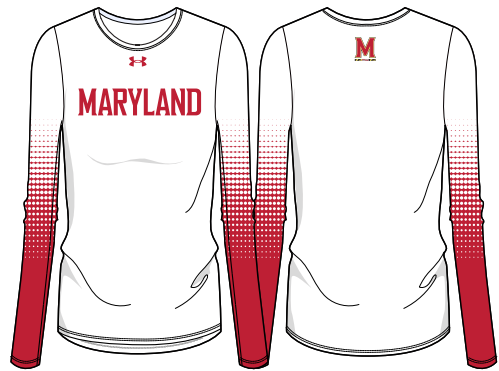
NEW DESIGN FIRST SHIP: 6/1/2024



SPRINT



SCOUT



UA ECLIPSE

AF TRAINING LONGSLEEVE TEE

XS-2XL, OVERSIZE 3XL, YSM-YXL

LOOSELST	SIZE	PRICE
UJGL2W (W)	XS-2XL	\$90.00
UJGL2Y (Y)	YSM-YXL	\$86.00

• New lightweight 4.8 oz. fabric with increased stretch for ultimate comfort

OVERSIZED SURCHARGE +\$5 PER SIZE
ADDITIONAL LENGTH OPTIONS FOUND ON PAGE 56



NEW
AF TRAINING SHORTS

FIRST SHIP: 10/25/2024 // XS-2XL, OVERSIZE 3XL, YSM-YXL

POCKETED SHORT	SIZE	PRICE
UJGS3PW (W)	XS-2XL	\$75.00
UJGS3PY (Y)	YSM-YXL	\$70.00

NON-POCKETED SHORT	SIZE	PRICE
UJGS3W (W)	XS-2XL	\$70.00
UJGS3Y (Y)	YSM-YXL	\$65.00

HEADBAND	SIZE	PRICE
UJLHBW1 (W)	OSFA	\$34.00

 5" INSEAM FOR POCKETED AND NON-POCKETED SHORT
 OVERSIZED SURCHARGE +\$5 PER SIZE
 ADDITIONAL LENGTH OPTIONS FOUND ON PAGE 56


SPEED
 NEW DESIGN FIRST SHIP: 6/1/2024



SPRINT



SCOUT


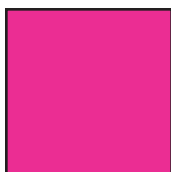

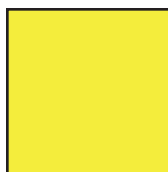


UA ECLIPSE

ARMOUR FUSE

						
WHITE	BLACK	PITCH GRAY	GRAPHITE	BASEBALL GRAY	SILVER GRAY	OCEAN STORM
						
MIDNIGHT NAVY	ROYAL	POWDERKEG BLUE	ELECTRIC BLUE	CAPRI	CAROLINA BLUE	COASTAL TEAL
						
PURPLE	MAROON	CARDINAL	CRIMSON	UNIVERSITY RED	TROPIC PINK	
						
PINK	VINTAGE WHITE	TAXI	STEELTOWN GOLD	TENNESSEE ORANGE	DARK ORANGE	
						
TEXAS ORANGE	CLEVELAND BROWN	GOLD RUSH	TEAM VEGAS GOLD	GRAYSTONE	MILITARY GREEN	
						
FOREST GREEN	TEAM KELLY GREEN	MIAMI TEAL	SEA GLASS	POISON		

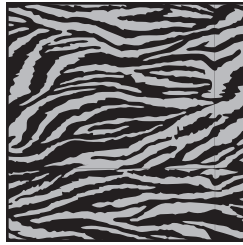
FLUORESCENTS (NOT CURRENTLY AVAILABLE IN TONAL PRINTS OR ON GAMEDAY PRODUCT)

			
ORANGE FLUORESCENT	PINK FLUORESCENT	GREEN FLUORESCENT	YELLOW FLUORESCENT

Prints available in all ArmourFuse colors. (Fluorescents not currently available in tonal prints)



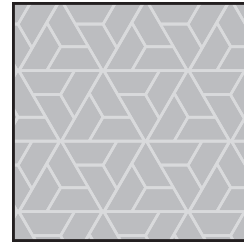
WOODLAND CAMO



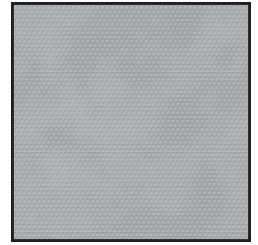
BENGAL



BLUR



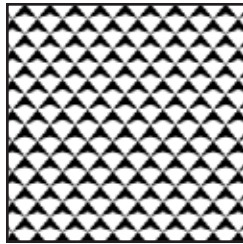
RAZOR



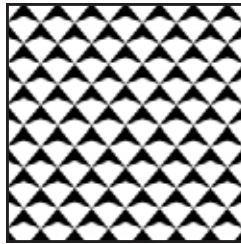
SCALE



SPLINTER



SHIELD MICRO



SHIELD MID



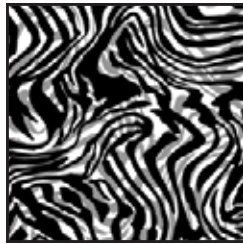
TIGER MICRO



TIGER MACRO



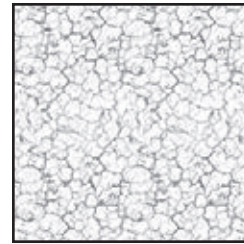
ZEBRA MICRO



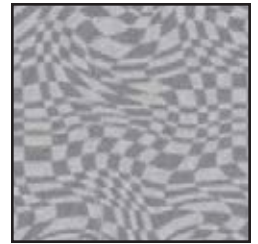
ZEBRA MACRO



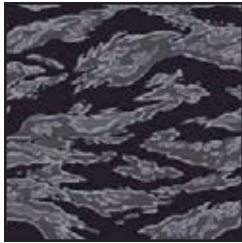
ABC CAMO



CRACKLE



HAFITONE CHECKER



TIGER CAMO



FLORAL
(Not available on Gameday)

DESERT CAMO (LOCKED COLOR COMBINATIONS, CANNOT BE ALTERED)



DESERT
WOODLAND CAMO

STOCK DECORATION OPTIONS

SCREEN PRINT	ONE COLOR	TWO COLORS
Team Name	\$5.50	\$10.50
Team Mascot/Logo	\$5.50	\$10.50
Front + Back Numbers	\$12.00	\$17.00

TWILL	ONE COLOR	TWO COLORS
Team Name	\$22.00	\$27.00
Front + Back Numbers	\$27.00	\$32.00
Player Names	\$22.00	
ArmourFuse Twill Patch (Max 3"x3")	\$11.00	\$11.00

EMBROIDERY	ONE COLOR	TWO COLORS
Team Name (up to 2")	\$10.00	\$10.00

see page 56 for Embroidered Mascot/Logo pricing

ADDITIONAL STOCK OPTIONS & NOTES

- Player Numbers Per Location = 1/2 of above
"Front + Back Numbers" pricing
- Player Name Directly On Jersey Only (No Nameplates)
- ArmourFuse Twill = Twill Pricing +\$10
- Add Tail to Script Font Twill Team Name +\$10
- Add Embroidery to Twill Tail +\$10
- Non-Stock designs and lettering may require additional charge at Under Armour's discretion (call for quote)

FONT OPTIONS

BADGER

ABCDEFGHIJKLMNOPQRSTUVWXYZ
0123456789

BEAR

ABCDEFGHIJKLMNOPQRSTUVWXYZ
0123456789

CADET

ABCDEFGHIJKLMNOPQRSTUVWXYZ
0123456789

FULL BLOCK

ABCDEFGHIJKLMNOPQRSTUVWXYZ
0123456789

TERRAFONT

ABCDEFGHIJKLMNOPQRSTUVWXYZ
0123456789

PREMIER

ABCDEFGHIJKLMNOPQRSTUVWXYZ
0123456789

TUSCAN

ABCDEFGHIJKLMNOPQRSTUVWXYZ
0123456789

UNDENIABLE

ABCDEFGHIJKLMNOPQRSTUVWXYZ
0123456789

UA COLLEGIATE SANS

ABCDEFGHIJKLMNOPQRSTUVWXYZ
0123456789

UA COLLEGIATE SANS CONDENSED

ABCDEFGHIJKLMNOPQRSTUVWXYZ
0123456789

UA COLLEGIATE SERIF

ABCDEFGHIJKLMNOPQRSTUVWXYZ
0123456789

UA COLLEGIATE SERIF CONDENSED

ABCDEFGHIJKLMNOPQRSTUVWXYZ
0123456789

MODERN

ABCDEFGHIJKLMNOPQRSTUVWXYZ
0123456789

ATHLETIC SCRIPT

ABCDEFGHIJKLMNOPQRSTUVWXYZ
abcdefghijklmnopqrstuvwxyz

SWINGMAN

ABCDEFGHIJKLMNOPQRSTUVWXYZ
abcdefghijklmnopqrstuvwxyz

NOTE:

- Gameday Select Package Pricing now includes all of the above listed fonts
- Dropped fonts available for fill-in orders only

LETTERING ARRANGEMENTS

STRAIGHT

TEAMNAME

BRIDGED

TEAMNAME

ARCH

TEAMNAME





















VERTICAL ARCH

TEAMNAME

SCRIPT WITH TAIL

Teamname

GAMEDAY OPTIONS

3/16" 1-COLOR PIPE					1/2" 3-COLOR BRAID			INCLUDED PIPE/BRAID	OPTIONAL PANT ALTERATIONS	LIST PRICE
					ANY COMBO OF PIPE COLORS	1 2 3	1. Jersey Front	Reduce Knicker Inseam 2" and Hem w/ Elastic	\$0.00	
WHITE	BASEBALL GRAY	BLACK	MIDNIGHT NAVY	UNIVERSITY RED			Around Neck	Increase Knicker Inseam 2" and Hem w/ Elastic	\$0.00	
							OR	Increase Knicker Inseam 4" and Hem w/ Elastic*	\$15.00	
ROYAL	FOREST GREEN	MAROON	PURPLE	DARK ORANGE			Around Placket	Reduce Relaxed/Tapered Inseam 2" and Hem	\$0.00	
							OR	Increase Relaxed/Tapered Inseam 2" and Hem	\$0.00	
STEELTOWN GOLD	TEAM KELLY GREEN	CARDINAL	TEAM VEGAS GOLD	CAROLINA BLUE			None	Increase Relaxed/Tapered Inseam 4" and Hem*	\$15.00	
							2. Jersey Sleeves			
CLEVELAND BROWN	TEAL	TEXAS ORANGE	SILVER GRAY	GRAPHITE			Sleeve Ends	OPTIONAL ARMOURFUSE® TWILL (L X H)	LIST PRICE	
							OR	Custom Font Team Name (Max. 14" x 4.25")	\$10.00	
							None	Custom Left Chest Team Logo (Max. 4" x 5")	\$15.00	
							3. Pants	Custom Sleeve Patch (Max. 4" x 4")	\$15.00	
							Down Side	Custom Back Neck Patch (Max. 3" x 2")	\$15.00	
							OR	Player Name (On Nameplate)	\$40.00	
							None	Player Name Directly on Jersey (No Nameplate)	\$30.00	
								Blank Nameplate	\$7.00	
								Add Tail to Script Font Team Name	\$20.00	
						Add Text to Script Font Tail	\$20.00			

Note: Vector art must be provided for custom Armourfuse® Twill or additional artwork charges will apply

*Available on Men's styles only










STOCK OPTIONS










3/16" 1-COLOR PIPE	LIST PRICE
Around Placket (UBJ316P)	\$17.00
Sleeve Ends (UBJ316S)	\$17.00
Down Side (UBP316D)	\$17.00

1/2" 3-COLOR BRAID	LIST PRICE
Around Placket (UBJ12AP)	\$17.00
Around Neck (UBJ12NB)	\$17.00
Sleeve Ends (UBJ12SE)	\$17.00
Down Sides (UBP12DS)	\$17.00

NOTE: Additional leadtime should be expected for orders including piping, braiding and/or hemming. Please contact a UA Sale Rep for updates.

PIPE & BRAID AVAILABLE COLORS

Pipe 3/16"						
	WHITE	BLACK	MIDNIGHT NAVY	UNIVERSITY RED	ROYAL	FOREST GREEN
						
	MAROON	PURPLE	DARK ORANGE	CARDINAL	TEAM VEGAS GOLD	

Braid 1/2"				
	BK/WH/BK	NA/WH/NA	SC/WH/SC	RO/WH/RO
				
	DG/WH/DG	MA/WH/MA	PU/WH/PY	OR/WH/OR
				
	CA/WH/CA	VG/WH/VG		

ADDITIONAL LENGTH OPTIONS (ARMOURFUSE ONLY - \$10 FOR ALL -/+ OPTIONS)

BASEBALL/SOFTBALL

TYPE	ADJUSTMENT	CODE
JERSEYS	Add 2" body length	UJX2BDY
	Add 4" body length	UJX4BDY
PANTS	Subtract 2" from inseam	UJSHTN2
	Add 2" to inseam length	UJX2INS
	Add 4" to inseam length	UJX4INS

FOOTBALL

TYPE	ADJUSTMENT	CODE
JERSEYS	Shorten to waist length	
PANTS	Add 2" to inseam length	UJX2INS

LACROSSE/ FIELD HOCKEY

TYPE	ADJUSTMENT	CODE
JERSEYS	Add 2" body length	UJX2BDY
SHORTS	Subtract 1" from inseam	UJSHTN1
	Subtract 2" from inseam	UJSHTN2
	Add 1" to inseam length	UJX1INS
	Add 2" to inseam length	UJX2INS
KILTS	Add 1" to inseam length	UJX1INS
	Add 2" to inseam length	UJX2INS

BASKETBALL

TYPE	ADJUSTMENT	CODE
JERSEYS	Add 2" body length	UJX2BDY
	Add 4" body length	UJX4BDY
	Add 6" body length	UJX6BDY
SHORTS	Subtract 1" from inseam	UJSHTN1
	Add 1" to inseam length	UJX1INS
	Add 2" to inseam length	UJX2INS
	Add 3" to inseam length	UJX3INS
SHOOTING SHIRTS	Add 2" body, 1" sleeve	UJX2B1S
	Add 4" body, 2" sleeve	UJX4B2S
	Add 6" body, 3" sleeve	UJX6B3S

SOCCER

TYPE	ADJUSTMENT	CODE
JERSEYS	Add 2" body length	UJX2BDY
SHORTS	Subtract 1" from inseam	UJSHTN1
	Subtract 2" from inseam	UJSHTN2
	Add 1" to inseam length	UJX1INS
	Add 2" to inseam length	UJX2INS

TRACK & FIELD

TYPE	ADJUSTMENT	CODE
JERSEYS	Add 2" body length	UJX2BDY
LOOSE SHORTS*	Subtract 1" from inseam Add 1" to inseam length	UJSHTN1 UJX1INS

*UJTS2M & UJTS2W ONLY

TRAINING

TYPE	ADJUSTMENT	CODE
JERSEYS	Add 2" body length	UJX2BDY
	Add 4" body length	UJX4BDY
	Add 6" body length	UJX6BDY
SHORTS	Subtract 1" from inseam	UJSHTN1
	Subtract 2" from inseam	UJSHTN2
	Add 1" to inseam length	UJX1INS
	Add 2" to inseam length	UJX2INS
	Add 3" to inseam length	UJX3INS

VOLLEYBALL

TYPE	ADJUSTMENT	CODE
JERSEYS	Add 2" body length	UJX2BDY
SHORTS	Subtract 1" from inseam	UJSHTN1
	Subtract 2" from inseam	UJSHTN2

EMBROIDERY

MASCOTS (STOCK ONLY) LIST PRICE

Mascot	\$11.00
Mascot with One Line	\$12.00
Mascot with Two Lines	\$13.00
American Flag	\$11.00
Small/Homeplate	\$6.00

DIGITIZING (STOCK AND ARMOURFUSE ONLY) LIST PRICE

Stock Designs and Lettering	\$180.00
Custom Logos	Call for Quote

- Prices are based upon size of designs, not the number of colors. Prices are subject to change if design exceeds specifications.
- Dimensions are maximum space - unless specifically noted best judgement will be used.
- Letter styles are available horizontal or arched.
- No digitizing charge for team names.

- Flag size up to 2" by 3" (bigger area - call for quote)
- Minimum order charges apply for embroidery
- All designs require an additional digitizing charge, except:
 - 1) Digitized designs supplied on a disk
 - 2) Digitized design is a re-order of an existing design

STANDARD SLEEVE PRINT STRIPES

*OPTIONS - Code numbers listed below stripe patterns

*Stripes may be adjusted to fit smaller garments and not measure exactly as shown.

01: 1/2" STRIPE, 1/2" SPACE, 2" STRIPE, 1/2" SPACE, 1/2" STRIPE

02: 1/2" STRIPE, 1/2" SPACE, 2" STRIPE, 1/2" SPACE, 1/2" STRIPE

05: 3/4" STRIPE, 1/4" SPACE, 3/4" STRIPE, 1/4" SPACE, 3/4" STRIPE, 1/4" SPACE, 3/4" STRIPE, 1/4" SPACE, 3/4" STRIPE

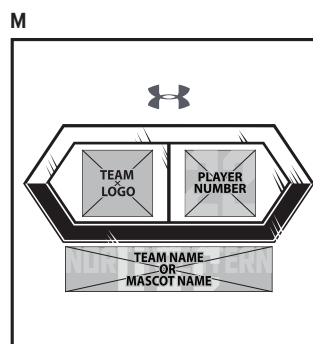
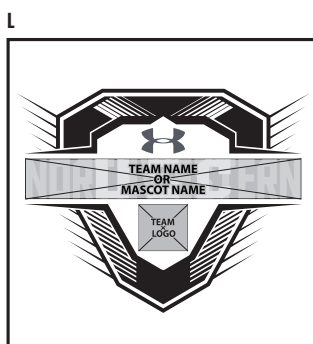
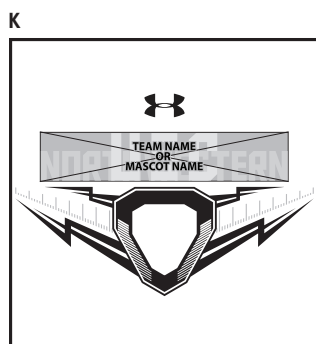
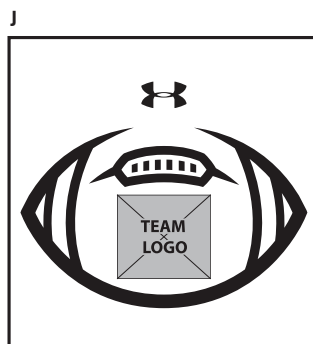
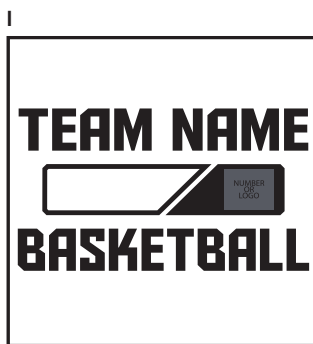
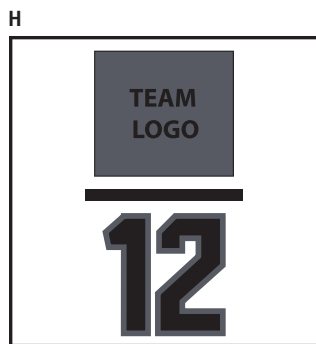
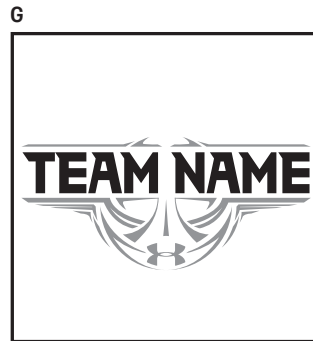
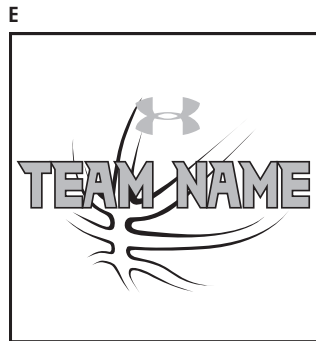
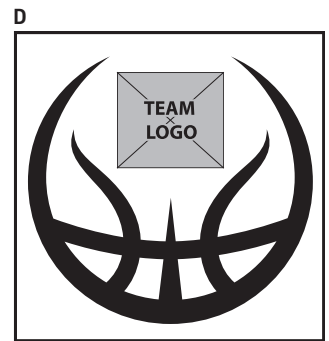
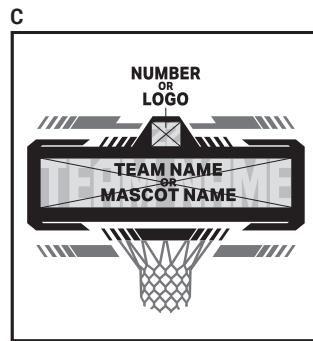
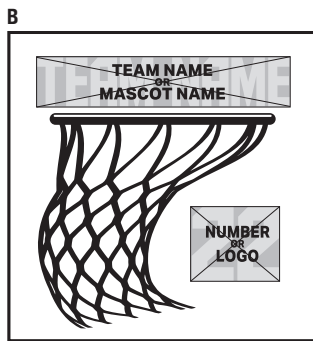
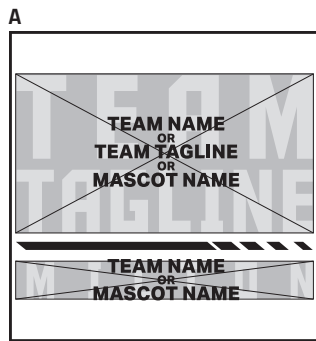
06: 2" STRIPE, 2" STRIPE

07: 1/4" STRIPE, 1" STRIPE, 1/4" STRIPE, 1" SPACE, 1/4" STRIPE, 1" STRIPE, 1/4" STRIPE, 1" SPACE

08: 1" STRIPE, 1" STRIPE, 1" SPACE, 1" STRIPE, 1" STRIPE

09: 1 1/2" STRIPE, 1 1/2" STRIPE, 1 1/2" STRIPE

ARMOURFUSE® GRAPHIC OPTIONS



UNIFORM CARE INSTRUCTIONS

To enhance the appearance and extend the life of your uniforms, Under Armour recommends that you follow these cleaning and storing procedures:

DO NOT DRY CLEAN

DO NOT WASH IN HOT WATER

DO NOT USE CHLORINE BLEACH

DO NOT USE FABRIC SOFTENER

DO NOT WASH WHITES AND COLORS TOGETHER

DO NOT OVERLOAD THE WASHING MACHINE

DO NOT MACHINE DRY ON HIGH HEAT

DO NOT LEAVE WET OR DAMP GARMENTS IN YOUR TRAVEL BAG, IN A PILE WITH OTHER CLOTHING OR IN WASHING MACHINE

- Pre wash uniform prior to use.
- Uniforms should always be laundered immediately after wearing. However, if this is not possible, rinse garments and hang individually on rust-proof hangers. (Moisture may cause color migration of acid dyes so we advise separating wet or damp uniforms.)
- Belts and any other contrasting color items should be washed separately from the garment.
- It is always advisable to test wash a single uniform according to directions before washing an entire load.
- Wash and rinse all garments in warm water (approx. 110°) with mild detergent. Remove promptly after wash cycle.
- For optimum results, hang garments (especially those with elastane) to dry. If you cannot hang dry, machine dry on the lowest setting. Turn jerseys inside out before machine drying. Remove items from dryer immediately upon completion of the cycle. (Excessive heat can cause fabric shrinkage, discoloration, and cracking and peeling of vinyl plastisol lettering inks.)
- Make sure uniforms are completely dry before storing. Store in a dry area to prevent mildew. Protect them from sunlight and fluorescent light to prevent yellowing.

PLEASE NOTE: Under Armour will not be responsible for uniforms that are damaged due to improper care and maintenance. Failure to follow our specified care instructions will void all guarantees.

UNIFORM FILL-IN LIFECYCLE

LAST SHOWN IN CATALOG	LAST FILL-IN SEASON	LAST FILL-IN SHIP
FA'21	FA'24	12/15/2024
WI'21	WI'24	3/15/2025
SP'22	SP'25	6/15/2025
FA'22	FA'25	12/15/2025
WI'22	WI'25	3/15/2026
SP'23	SP'26	6/15/2026
FA'23	FA'26	12/15/2026
W'23	W'26	3/15/2027
SP'24	SP'27	6/15/2027
FA'24	FA'27	12/15/2027
WI'24	WI'27	3/15/2028
SP'25	SP'28	6/15/2028

G **GAMEDAY TEAM UNIFORMS**
ORDERING INFORMATION AND CUSTOMER SERVICE:
1-800-474-6118
www.uacustomuniforms.com

AF **ARMOURFUSE™ TEAM UNIFORMS**
ORDERING INFORMATION AND CUSTOMER SERVICE:
1-888-871-0990
www.underarmourteamuniforms.com

NX **UA NEXT**
ORDERING INFORMATION AND CUSTOMER SERVICE:
1-888-871-0990
www.underarmourteamuniforms.com

S **STOCK TEAM UNIFORMS**
ORDERING INFORMATION AND CUSTOMER SERVICE:
1-888-871-0990
www.underarmourteamuniforms.com

ORDERING INFORMATION

Guarantee:

The materials and workmanship of our garments are guaranteed when given fair treatment and used under normal conditions.

Color Matching:

Scientifically, it is not possible to achieve a perfect color match from one dye lot to another. Therefore, we cannot guarantee a perfect match from order to order or from one fabric to another.

Color Abbreviation Key:

The following abbreviations may be used when ordering merchandise.

BG Baseball Gray	EB Electric Blue	PI Pink	SI Silver Grey
BK Black	GP Graphite	PK Powderkeg Blue	TI Taxi
BR Brown	KE Team Kelly Green	PO Poison	TE Teal
CA Cardinal	LG Steeltown Gold	PU Purple	TO Texas Orange
CB Carolina Blue	MA Maroon	RO Royal	TP Tropic Pink
CP Capri	NA Midnight Navy	RU Gold Rush	VG Team Vegas Gold
DG Forest Green	OR Dark Orange	SC University Red	WH White

Price Policy:

All catalog prices are list or suggested retail. Prices are subject to change without notice. Merchandise will be invoiced based on the prices in effect at the time the order is placed.

Terms:

Prices are FOB shipping point. Payment is due Net 30.

Minimum Order Charges:

A handling charge of \$10.00 will be added to orders of less than \$150.00 list. Custom and GamedaySelect fill-in minimum order is 6 units per style and color. A 100% surcharge will be applied to orders of 1-2 units, and a 50% surcharge for orders of 3-5 units.

Lettered Orders for COD Shipment:

A 50% deposit is required on all lettered orders calling for COD shipment.

Delivery:

Shipments will always be made by the fastest, least expensive means possible. The customer will assume any additional expense required to expedite delivery.

Order Cancellations:

Cancellations must be received at least one day prior to the ship date. Special order garments cannot be cancelled after they have been cut. Lettered garments cannot be cancelled after they have been printed or sewn.

Returns:

Claims must be reported to our office within 10 working days of merchandise receipt. Returns cannot be made after 30 days of the invoice date. All returns for plain merchandise must be clearly marked with an authorization number or label obtained from our office. All returns for lettered merchandise must be clearly marked "LETTERING." When requesting an authorization label, the following information is required: Reason for return, Invoice #, Style #, Color, Size/Quantity. An authorization label will then be sent to you to prepare the merchandise for return shipment. We reserve the right to repair, replace or issue credit for any merchandise returned. A 15% restocking fee and shipping charges will be charged for merchandise returned that is either not damaged or the damage is determined not to be our fault. All worn garments must be properly laundered prior to return or they will not be accepted.

All custom and custom-stock uniforms may not be returned under any circumstances if delivered properly.

Shortages:

All claims must be made within 10 days of the invoice date.

New Accounts:

All new accounts must be opened through your local sales representative. New accounts that do not have a Dunn and Bradstreet rating will be shipped COD until a credit line has been established.

Samples:

Samples will be entered and billed as a regular order. Samples cannot be returned without prior approval from our office.

Imprint Orders:

All imprint orders must be emailed, mailed or faxed in with detailed instructions on UA order forms. Imprint orders will not be taken by phone. Once garments have been lettered, the order cannot be cancelled or returned.

Under Armour will not be responsible for any items not checked for order accuracy or sizing before being sent to a printer / screener. We will not be responsible for shrinkage, defects, or damages caused during the imprinting of our garments by sources other than our own lettering department. Screenprinting sublimated uniforms can cause color migration. We do not recommend screenprinting on sublimated garments.

Photography is the property of Under Armour and is not to be used without written authorization.

MEN'S

COMPRESSION

FITTED

LOOSE



Ultra-tight, second skin fit that keeps you locked in & makes you feel like you can do anything.



A slimmer, athletic cut that allows total mobility but eliminates the bulk of extra fabric.



Fuller cut for complete comfort, total range of motion & greater breathability.

	US SIZE	CHEST (IN)	WAIST (IN)	HIP (IN)
SM	26-28	34-37	29-31	34-36
MD	30-32	37-41	31-34	36-39
LG	34-36	41-44	34-37	39-42
XL	38-40	44-48	37-41	42-46
2XL	42-44	48-52	41-45.5	46-50
3XL	46-48	52-56	45.5-50	50-54
4XL	50-52	56-60	50-54.5	54-58
5XL	54-56	60-64	54.5-59	58-62

HOW TO MEASURE



CHEST: Place the tape measure under your arms at the fullest part of your chest, wrap around your body until your fingers meet and mark the measurement

WAIST: Measure around your natural waistline – right above your hips. Be careful not to squeeze too tight to allow a little give.

HIPS: With your feet together, measure around the fullest part of your hips to ensure you'll have enough room to move comfortably.

BOYS

FITTED

LOOSE



A slimmer, athletic cut that allows total mobility but eliminates the bulk of extra fabric.



Fuller cut for complete comfort, total range of motion & greater breathability.

	US SIZE	CHEST (IN)	WAIST (IN)	HIP (IN)
YXS	7	25-26	23-24	26-27
YSM	8	26-27	24-25	27-28
YMD	10-12	27-29	25-27	28-31
YLG	14-16	29-32.5	27-30	31-34
YXL	18-20	32.5-35.5	30-33	34-37

HOW TO MEASURE



CHEST: Place the tape measure under your arms at the fullest part of your chest, wrap around your body until your fingers meet and mark the measurement

WAIST: Measure around your natural waistline – right above your hips. Be careful not to squeeze too tight to allow a little give.

HIPS: With your feet together, measure around the fullest part of your hips to ensure you'll have enough room to move comfortably.

WOMEN'S

COMPRESSION



Ultra-tight, second skin fit that keeps you locked in & makes you feel like you can do anything.

FITTED



Sits close to the skin for a streamlined fit without the squeeze of compression.

LOOSE



Fuller, more generous cut for enhanced range of motion & an effortlessly relaxed fit.

	US SIZE	CHEST (IN)	WAIST (IN)	HIP (IN)
XS	0-2	32.5-33.5	25.5-27	34.5-36
S	4-6	33.5-36	27-29	36-38
M	8-10	36-38	29-31	38-40
L	12-14	38-41	31-34	40-43
XL	16	41-44	34-37	43-46
2XL	18	44-47	37-40	46-49
3XL	20	47-50	40-43	49-52
4XL	22	50-53	43-46	52-55

HOW TO MEASURE



CHEST: Place the tape measure under your arms at the fullest part of your chest, wrap around your body until your fingers meet and mark the measurement

WAIST: Measure around your natural waistline – right above your hips. Be careful not to squeeze too tight to allow a little give.

HIPS: With your feet together, measure around the fullest part of your hips to ensure you'll have enough room to move comfortably.

GIRLS

FITTED



Sits close to the skin for a streamlined fit without the squeeze of compression.

LOOSE



Fuller, more generous cut for enhanced range of motion & an effortlessly relaxed fit.

	US SIZE	CHEST (IN)	WAIST (IN)	HIP (IN)
YXS	7	25-26.5	23-24	26-28
YSM	8	26.5-27.5	24-24.5	28-29
YMD	10-12	27.5-30.5	24.5-26.5	29-32.5
YLG	14-16	30.5-34	26.5-30.5	32.5-36.5
YXL	18-20	34-36	30.5-32.5	36.5-38.5

HOW TO MEASURE



CHEST: Place the tape measure under your arms at the fullest part of your chest, wrap around your body until your fingers meet and mark the measurement

WAIST: Measure around your natural waistline – right above your hips. Be careful not to squeeze too tight to allow a little give.

HIPS: With your feet together, measure around the fullest part of your hips to ensure you'll have enough room to move comfortably.

WEST

PAT BAUER
SR. REGIONAL MANAGER
410.299.3798
pbauer@underarmour.com
WA // OR // MT //
ID // AK // WY

JEFF UTTZ
626.484.3496
jeffu@underarmour.com
CA // NV // HI // AZ // UT

HALEY GILLMORE
303.562.6053
hgillmore@underarmour.com
East & North TX // OK // CO

FRANK WEBER
618.540.3955
fweber@underarmour.com
IL // MO // IA // MN //
NE // KS // ND // SD //

BLAKE KUENZI
405.488.4942
blake.kuenzi@underarmour.com
NM // Central, South & West Texas

EAST

FRANK NUNAN
SR. REGIONAL MANAGER
484.576.9777
fnunan@underarmour.com
DE // NJ // Philadelphia area

MONTE GIBBS
662.801.3039
mgibbs@underarmour.com
TN // LA // AL //
MS // AR // KY

DAN WILLIAMS
352.672.1676
dwilliams@underarmour.com
NC // SC // GA // FL

TONY DONOFRIO
419.356.9742
tonydl@underarmour.com
WI // MI // IN // OH // WV

GARY POWERS
410.746.3790
gpowers@underarmour.com
MD // DC // VA // Eastern PA

BOB BARTLETT
315.380.6505
bobb@underarmour.com
NY // Western PA

JAY KELLEHER
443.615.0462
jkelleher@underarmour.com
New England

COLLEGIATE

TOMMY AMICO
951.808.0367
tamico@underarmour.com
WEST

TODD LOCKLEAR
410.454.6572
tlocklear@underarmour.com
EAST

CHRIS PORTS
443.220.1009
cports@underarmour.com
MID ATLANTIC

BELLA GARONE
631.307.0009
isabella.garone@underarmour.com
NORTHEAST

ALEX BRUEGGEMANN
410.652.4337
abrueggemann@underarmour.com
SOUTH

LICENSEES

FOUNDER SPORT GROUP
Stock & Armourfuse Uniforms
www.underarmourteamuniforms.com
888.871.0990
UAStatus@foundersportgroup.com

POWERS ATHLETIC
Custom Uniforms
www.uacustomuniforms.com
800.474.6118
customerservice@powersathletic.com

THE GAME
Custom Headwear
www.uateamheadwear.com
800.723.5656
customerservice@2thegame.com

USB
McDavid & Shock Doctor
Water Bottles
657.383.4438
UA@unitedspb.com

SAFILO
Eyewear
uateamsportsorders@safilo.com



TEL: 1.888.828.1547 / B2B: ARMOURHOUSE.UNDERARMOUR.COM

COLLEGIATE

TEAMSPTS COLLEGIATE / TEAMSPTS.COLLEGIATE@UNDERARMOUR.COM

EAST

TEAM SPORTS SE / TEAMSPTSSE@UNDERARMOUR.COM
TEAM SPORTS NE / TEAMSPTSNE@UNDERARMOUR.COM

WEST

TEAM SPORTS WC / TEAMSPTSWC@UNDERARMOUR.COM
TEAM SPORTS SW / TEAMSPTS@UNDERARMOUR.COM

ALL TEAM SPORTS ORDERS AND QUESTIONS PLEASE USE THE FOLLOWING:

1.888.828.1547
Corporate Headquarters
1020 Hull Street
Baltimore, MD 21230

CORPORATE OFFICE HOURS OF OPERATION

Monday through Friday, 8:30am – 5:30pm, EST.

UNDER ARMOUR® B2B – ONLINE ORDERING

armourhouse.underarmour.com

- 24/7 access to check inventory and place orders
- Ability to track orders and shipments
- Priority product allocation
- Faster processing time

UNDER ARMOUR® B2B – SUPPORT

B2B_support@underarmour.com

UNDER ARMOUR® RETURN POLICY

Under Armour® stands behind its gear and EXPECTS nothing less than perfection. If you have received a defective product, an incorrect size, or an incorrect order, please contact us immediately for a return authorization number so that we can quickly process your return and ensure your satisfaction.

ALL RETURNS MUST BE COMPLETED WITHIN 30 DAYS OF RECEIPT AND MUST BE IN REASONABLE CONDITION. ALL RETURNS MUST HAVE THE RA# CLEARLY MARKED ON THE CARTON. ALL RETURNS ARE SUBJECT TO A 15% RE-STOCKING FEE.

Should you need to return or exchange an item, you MUST include your RA#, a copy of your invoice, and an explanation in writing as to why you are returning the item. Send your return to the marked address on your pack list. If you are exchanging merchandise, you are responsible for the cost of returning the product. Original shipping costs are non-refundable. All returned merchandise must be received in new, resalable condition.

ODH RETURNS:

Under Armour Returns
RA#
7030 Tradepoint Ave
Dock Door 69
Sparrows Point, MD 21219

RIALTO RETURNS:

Under Armour Returns
RA#
2510 W Walnut Ave
Rialto, CA 92376

NASHVILLE RETURNS:

Under Armour Returns
RA#
13 Athlete's Way
Mt Juliet, TN 37122

UNDER ARMOUR® CANCELLATION POLICY

Any request for cancellation of an order for UA products must be made, in writing, through the customer's UA Sales Representative. A request to cancel an order must be made more than 30 days before the customer's original desired ship date. All cancellations are subject to UA approval.

ALL PRICES SET FORTH HEREIN ARE SUBJECT TO CHANGE WITHOUT NOTICE.

© 2024 Under Armour®. All rights reserved. All trademarks, images, photographs, logos, and graphics are owned or controlled by Under Armour®.

Confidential and business proprietary information for internal Under Armour®, Inc. use only. Reproduction is strictly prohibited.

UNDER ARMOUR® PERFORMANCE
SPRING 2025